

DOWNLOAD & PRINT \$1 CHOCOLATE BAR SPRING WRAPPERS

INSTRUCTIONS

Print the following pages of chocolate bar wrapper designs, as many as you need.

Using scissors or a paper cutter, cut out the wrappers using the crop marks. Finished wrapper size is 5.75" x 4.25".

To adhere the wrapper to the bar, wrap the printout around the bar, centering it. Apply a piece of double-stick tape to the underside of the outer flap that has a graphic on it (so the blank flap will end up being underneath), and press to adhere to the top of the other side of the wrapper.

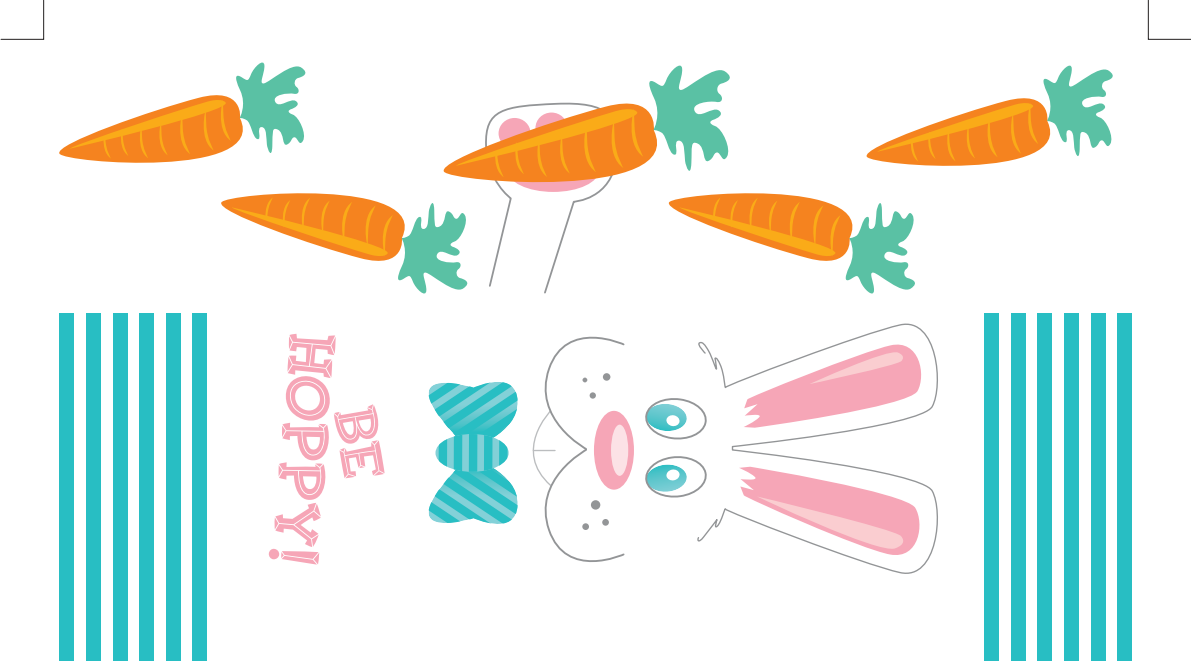
You can put out the wrappers with the candy bars on your fundraising table, along with some double-sided tape, for customers to select the design.

OR

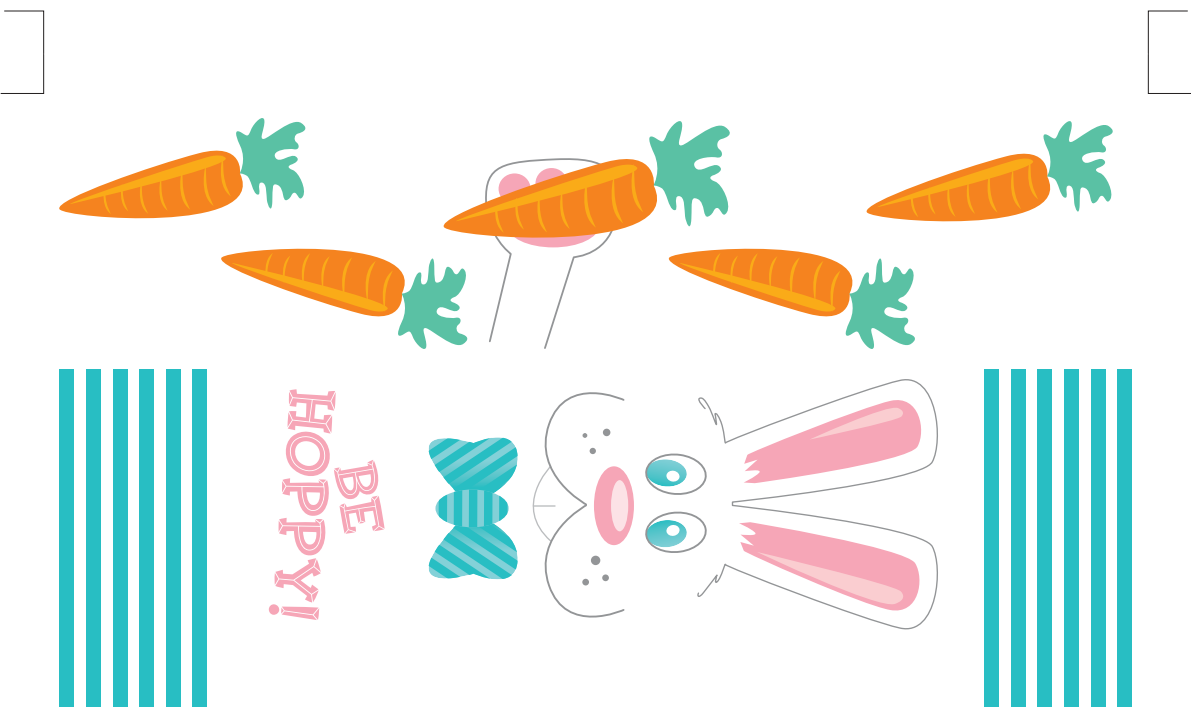
You can pre-wrap the bars yourself. If you are selling different chocolate bar flavors, be sure to keep them organized in some manner so you as well as your customers know what they are buying.

\$1 CHOCOLATE TEMPLATE

cut designs on the solid lines designated here

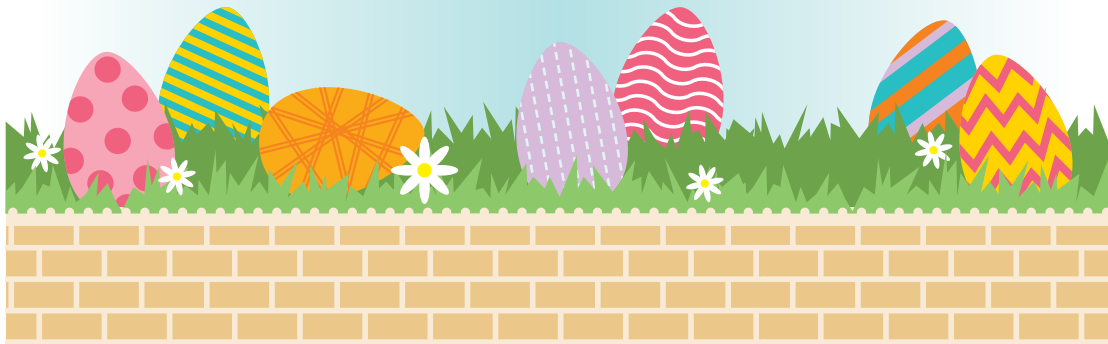


FOLD THIS SIDE UNDER



FOLD THIS SIDE UNDER

HAVE AN
EGG-CELLENT DAY!

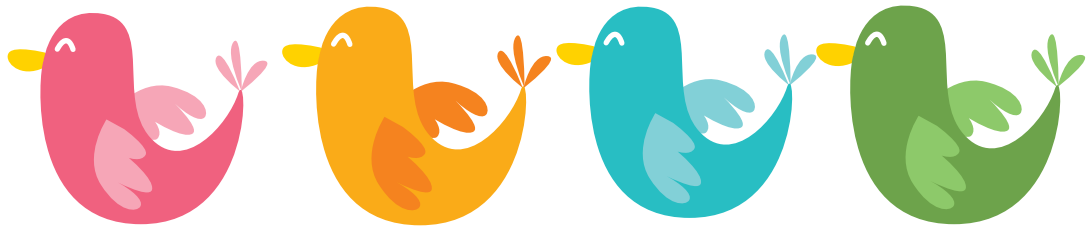


FOLD THIS SIDE UNDER

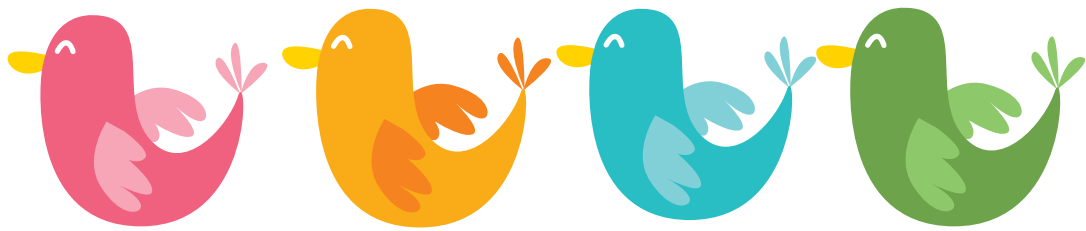
HAVE AN
EGG-CELLENT DAY!



FOLD THIS SIDE UNDER



FOLD THIS SIDE UNDER



FOLD THIS SIDE UNDER